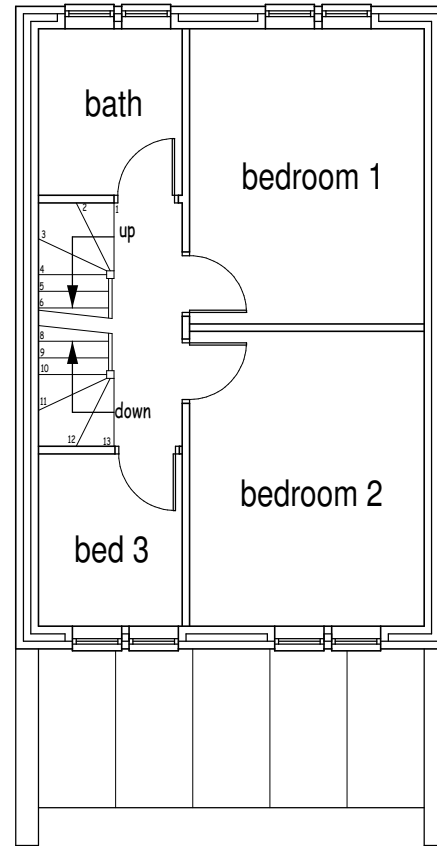


Proposed ground floor layout.



Proposed ground floor layout.

Room dimensions.

Kitchen - 2.8 x 3.7m.
 Lounge - 5.1(max) x 6.3(max)m
 WC - 0.9 x 2.2m.

Bed 1 - 3.1 x 3.9m.
 Bed 2 - 3.1 x 3.9m.
 Bed 3 - 1.9 x 2.2m.
 Bath - 1.9 x 2.2m.

Plots 17 and 18 - 2 storey, 3 bed (92 m²/990 ft²)